

January - February



PELÓ:QES (torch season- fishing with torches on the canoe)

February – March



TEMT'ELEMTSES (time when hands stick to things in the cold)

March – April



WELEK'ES (little frog season)

April – May



TEMKWÌKWEXEL (time for baby sockeye salmon)

May – June



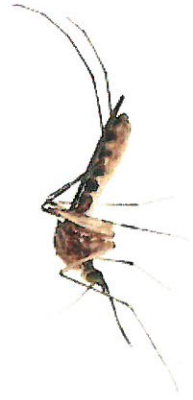
TEM'ELÍLE (salmonberry time)

June – July



TEMQ'ÓQ'Ó (high water time)

July – August



TEMQWÁ:L (mosquito time)

August – September



TEMTHEQI (Sockeye salmon time)

September- October



TEMKW'Ó:LEXW (Dog Salmon time)

October - November



TEMPÓ:KW'

(time for Chehalis Spring Salmon)

November - December



XETS'Ö:WESTEL

(time to store the canoe paddles)

December – January



MEQÓ:S

(fallen snow season)

<p>January - February</p>	<p>February - March</p>	<p>March - April</p>	<p>April - May</p>
<p>PELÓ:QES (torch season - fishing with torches on the canoe)</p> 	<p>TEMT'ELEMTSES (time when hands stick to things in the cold)</p> 	<p>WELEK'ES (little frog season)</p> 	<p>TEMKWIKWEXEL (time for baby sockeye salmon)</p> 
<p>May - June</p>	<p>June - July</p>	<p>July - August</p>	<p>August - September</p>
<p>TEM'ELÍLE (salmonberry time)</p> 	<p>TEMQ'ÓQ'Ó (high water time)</p> 	<p>TEMQWÁ:L (mosquito time)</p> 	<p>TEMTHEQI (Sockeye salmon time)</p> 
<p>September- October</p>	<p>October- November</p>	<p>November - December</p>	<p>December - January</p>
<p>TEMKW'Ó:LEXW (Dog Salmon time)</p> 	<p>TEMPÓ:KW' (time for Chehalis Spring Salmon)</p> 	<p>XETS'Ö:WESTEL (time to store the canoe paddles)</p> 	<p>MEQÓ:S (fallen snow season)</p> 